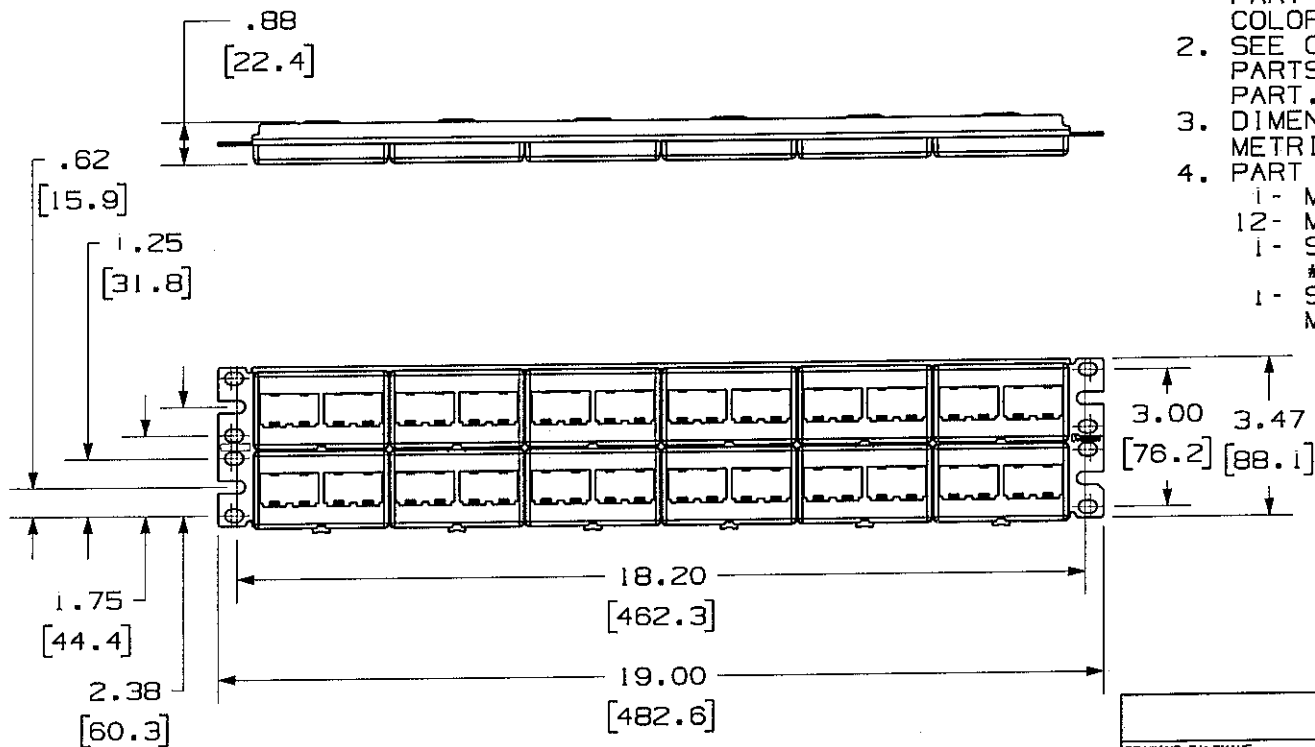


THIS COPY IS PROVIDED ON A RESTRICTED BASIS AND IS NOT TO BE USED IN ANY WAY DETRIMENTAL TO THE INTERESTS OF PANDUIT CORP.

PANDUIT P/N	WEIGHT
CPP48WBLY	8.78 LB/10 PCS (3990 g/10 PCS)

NOTES:

- SEE CURRENT CATALOG FOR ADDITIONAL PART NUMBER SUFFIXES TO INDICATE COLOR AND OR PACKAGE QUANTITY.
- SEE CATALOG FOR COMPLETE LIST OF PARTS APPLICABLE FOR USE WITH THIS PART.
- DIMENSIONS IN PARENTHESES ARE IN METRIC.
- PART INCLUDES:
  - 1- METAL STAMPING
  - 12- MODULAR FACEPLATE (CFFP4)
  - 1- SCREW KIT (INCLUDES FOUR #12-24 SCREWS)
  - 1- SCREW KIT (INCLUDES FOUR M6 SCREWS)



NETWORK SYSTEMS  
MAY 26 2006  
ENGINEERING DEPT

DRAWING FILENAME MO2479CA_DC54_00A.PRT		SIZE A
MINI-COM 48 PORT MODULAR PATCH PANEL CUSTOMER DRAWING		
	PANDUIT <sup>TM</sup> CORP. TINLEY PARK, ILL 60477	i.i. NUMBER N/A
	THIRD ANGLE PROJECTION	PRODUCT SPEC N/A
ALL DIMENSIONS ARE GIVEN IN INCHES, UNLESS OTHERWISE SPECIFIED. DIMENSIONAL TOLERANCES ARE: (.X) ± (.XXX) ± .010(.3) (.XX) ± .031(.8) ANGLES ±		WORK INSTRUCTION N/A
DRAWN BY JsP		SCALE NONE
DATE 4-19-06		PART NO. CPP48WBLY
MATERIAL PANEL - CRS FACEPALTE - ABS		DRAWING NO. 02479-054

REV	DATE	BY	CHK	DESCRIPTION	ECN	R	CUST	SUP	OTH
R	4-19-06	JsP	M/D	RELEASED TO PRODUCTION	02479-054	M/D	M/D		