



WIEGMANN®

ENCLOSURE SOLUTIONS
for the OEM, COMMERCIAL,
CONSTRUCTION and MRO Markets



...any application



**When your control needs demand integrity,
protect them with the very best enclosure money can buy.
Specify WIEGMANN®.**

Today's market segments like wastewater, food processing, petrochemical, green-focused breweries and mining to name just a few, demand the very best in protection. Wiegmann designs its enclosure in accordance to UL/NEMA standards and builds them to last.

Whether in 304 Stainless, 316 Stainless, Aluminum or Non-Metallic, Wiegmann uses only the best materials to help meet your performance needs - even in the most demanding environments.

One of the largest, standard, custom and modified product offerings available.

Market segments include:

- Petrochemical
- Mining
- Pulp & Paper Processing
- Food
- Wastewater Treatment
- Steel Mills
- Breweries
- Power Plants
- Conveyors
- Automation
- Machine Tooling
- Automotive
- System Integrators
- Commercial/Contractor
- Original Equipment Manufacturers



**POSITION AND PROTECTION
at your command!**

NEMA 4X
NEMA 4
NEMA 13
NEMA 12
NEMA 3R
NEMA 1



WIEGMANN®

NATIONALLY RECOGNIZED

Today, the Hubbell-Wiegmann name has become synonymous with traditional NEMA enclosures, JIC enclosures, Non-Metallic enclosures, Stainless enclosures, Aluminum enclosures and Wireway systems. With over 7,000 different standard products in stock, Wiegmann has one of the most complete Industrial/Commercial enclosure packages in North America.

- ▶ A subsidiary of Hubbell, Inc., a diversified \$3 billion global manufacturer, with over 12,000 employees in 9 countries.
- ▶ Automated tier one enclosure manufacturer.
- ▶ 100% "USA" based/manufactured enclosures.



WIEGMANN® ADVANTAGES

- ▶ 80 years of extensive experience in manufacturing electrical enclosure for the OEM, Commercial contractor, and MRO markets
- ▶ **HUBBELL®** Owned/Driven
- ▶ Supports ALL buying group partners "AD, IMARK, EQUITY"
- ▶ Aggressive SPA's, Marketing Programs, and Competitive Pricing
- ▶ Hubbell Electrical Systems Synergies "set to grow YOUR business"
WIEGMANN® KILLARK® RACO® BRYANT® BELL®
- ▶ Full breadth product line...7,000 SKUs
- ▶ Long history of OEM support "KING of Specials - Lead Times"
- ▶ Service Driven "small core group of direct decision makers"
- ▶ Distribution loyalty
- ▶ Regional and local availability
- ▶ Specialize in extreme/corrosive environment protection, "304SS, 316SS and Non-Metallic applications"
- ▶ Tier One Quality

WIEGMANN®

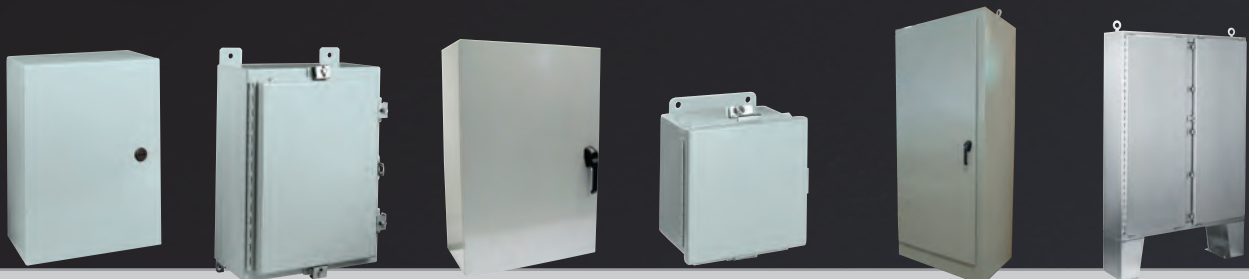
PRODUCT SELECTION GUIDE



STAINLESS STEEL

Numbers in () represent total part numbers available within family

Product Line	ULTIMATE SERIES	N4 WALL MOUNT SERIES	3PT WALL MOUNT SERIES	JIC SERIES	FREESTANDING SS SERIES	FLOORMOUNT SS SERIES
	N412SSC (52), N412WSSC (21), N412CSSST (18), N412CSSSTD (5)	SSN4 (76), ALN4 (16), SSN4X (9)	SSN43PT (13), SSN43PTA (13)	BN4SS (8), BN4CHSS (16), BN4CHAL (6)	SSFN43PT (14), SSFSDAN43PT (8), SSFSDN43PT (12), FSDADN43PT (5), N4SFSSS (3)	SSN4D (5), SSN4D3PT (6)
Size Ranges	12 x 12 x 6 to 60 x 36 x 12	16 x 12 x 6 to 60 x 36 x 16	24 x 20 x 6 to 36 x 36 x 12	4 x 4 x 3 to 16 x 14 x 6	60 x 24 x 18 to 90 x 72 x 36	62 x 48 x 10 to 74 x 72 x 24
Key Features	<ul style="list-style-type: none"> Aesthetic, attractive, sleek design. Accessory driven product line. Larger Sub Panel foot prints (sub panels are optional). Larger tub openings. 	<ul style="list-style-type: none"> Rugged workhorse. Clamps on three sides of door provides for an excellent seal. Padlocking provision. 	<ul style="list-style-type: none"> Rugged workhorse. Simple 3pt latching access. 	<ul style="list-style-type: none"> Single door junction boxes. Hinge cover. Lift off cover. 	<ul style="list-style-type: none"> Versatile NEMA 4X Freestanding. Simple 3pt latching access. Single or dual access. 	<ul style="list-style-type: none"> Floor mounted N4X. Simple 3pt latching or clamp options.
Standard Features	<ul style="list-style-type: none"> Available in 304 or 316 SS Plasma welded seams Removable & interchangeable doors Print Pocket Solid or Plexiglass doors FIP gasket 1/4 turn latches Rear mounting holes 20 Degree sloped top on ST series Smooth #4 pregrained finish. 	<ul style="list-style-type: none"> Available in 304 or 316 SS Available in .080 aluminum Seam welded design Continuous hinge Print Pocket Clamps three sides FIP gasket Hasp & staple (padlocking) External mtg feet top & bottom Optional sub panels Smooth #4 pregrained finish. 	<ul style="list-style-type: none"> Available in 304 or 316 SS Seam welded design Continuous hinge Print Pocket 3pt latching handle FIP gasket External mtg feet top & bottom Optional sub panels Smooth #4 pregrained finish. 	<ul style="list-style-type: none"> Available in 304 or 316 SS Seam welded design Continuous or lift off hinge Clamp secured lid FIP gasket External mtg feet top & bottom Optional sub panels Smooth #4 pregrained finish. 	<ul style="list-style-type: none"> Available in 304 or 316 SS Seam welded design Continuous hinge Print Pocket 3pt latching handle FIP gasket Optional sub panels Lifting eyes Smooth #4 pregrained finish. 	<ul style="list-style-type: none"> Available in 304 or 316 SS Welded 12" high leg kits Seam welded design Continuous hinge Print Pocket 3pt latching handle FIP gasket Optional sub panels Lifting eyes Smooth #4 pregrained finish.
Ratings	NEMA Type 3R, 4, 4X, 12, 13 UL & CSA	NEMA Type 3R, 4, 4X, 12, 13 UL & CSA	NEMA Type 3R, 4, 4X, 12 UL Pending	NEMA Type 3R, 4, 4X, 12 UL & CSA	NEMA Type 3R, 4, 4X, 12 UL Pending	NEMA Type 3R, 4, 4X, 12 UL Pending



MILD STEEL - NEMA 4 - ANSI 61

Numbers in () represent total part numbers available within family

Product Line	ULTIMATE SERIES	WALL MOUNT SERIES	3PT WALL MOUNT SERIES	JIC SERIES	FREESTANDING SERIES	FLOORMOUNT SERIES
	N412C (46), N412WC (27), N412CST (25)	N4 (40)	N43PT (40), N412C3PT (44)	BN4 (8), BN4CH (10)	FSN43PT (14), FSDAN43PT (8), FSDN43PT (12), FSDADN43PT (5), N4SFS (3)	N4D (5), N4D3PT (6)
Size Ranges	12 x 12 x 6 to 60 x 36 x 12	16 x 12 x 6 to 60 x 36 x 16	16 x 12 x 6 to 60 x 36 x 16	4 x 4 x 3 to 16 x 14 x 6	60 x 24 x 18 to 72 x 37 x 24	62 x 48 x 10 to 74 x 72 x 24
Key Features	<ul style="list-style-type: none"> Aesthetic, attractive, sleek design. Accessory driven product line. Larger Sub Panel foot prints (sub panels are optional). Larger tub openings. 	<ul style="list-style-type: none"> Rugged workhorse. Clamps on three sides of door provides for an excellent seal. Padlocking provision. 	<ul style="list-style-type: none"> Rugged workhorse. Simple 3pt latching access. 	<ul style="list-style-type: none"> Single door junction boxes. Hinge cover. Lift off cover. 	<ul style="list-style-type: none"> Versatile NEMA 4 Freestanding. Simple 3pt latching access. Single or dual access. 	
Standard Features	<ul style="list-style-type: none"> Concealed hinges Plasma welded seams Removable & interchangeable doors Print Pocket Solid or Plexiglass doors FIP gasket 1/4 turn latches Rear mounting holes 20 Degree sloped top on ST series ANSI 61 polyester powder 	<ul style="list-style-type: none"> Seam welded design Continuous hinge Print Pocket Clamps three sides FIP gasket Hasp & staple (padlocking) External mtg feet top & bottom Optional sub panels ANSI 61 polyester powder 	<ul style="list-style-type: none"> Seam welded design Continuous hinge Print Pocket 3pt latching handle FIP gasket External mtg feet top & bottom Optional sub panels ANSI 61 polyester powder 	<ul style="list-style-type: none"> Seam welded design Continuous or left off hinge Clamp secured lid External mtg feet top & bottom FIP gasket Optional sub panels ANSI 61 polyester powder 	<ul style="list-style-type: none"> Seam welded design Continuous hinge Print Pocket 3pt latching handle FIP gasket Optional sub panels Lifting eyes ANSI 61 polyester powder 	<ul style="list-style-type: none"> Welded 12" high leg kits Seam welded design Continuous hinge Print Pocket 3pt latching handle FIP gasket Optional sub panels Lifting eyes ANSI 61 polyester powder
Ratings	NEMA Type 3R, 4, 4X, 12, 13 UL & CSA	NEMA Type 3R, 4, 4X, 12, 13 UL & CSA	NEMA Type 3R, 4, 4X, 12 UL Pending	NEMA Type 3R, 4, 4X, 12, 13 UL & CSA	NEMA Type 3R, 4, 4X, 12, 13 UL Pending	NEMA Type 3R, 4, 4X, 12, 13 UL Pending

PRODUCT SELECTION GUIDE



MILD STEEL - NEMA 12 - ANSI 61 POLYESTER POWDER

Numbers in () represent total part numbers available within family

Product Line	JIC SERIES	N12 WALL MOUNT SERIES	DISCONNECT WALLMOUNT SERIES	FLOOR MOUNT SERIES	FREESTANDING SERIES	MULTI-DOOR SERIES
	B (14), BCH (22), BCHS (4), BSC (16), WAGIE (11), JIC (3), TCH (32), BCHL (20), BCHQR (7)	N12 (85), WAWF (12), WAFM (5)	SDN12 (32), SDN12PL (31), ABN12 (11), N412CSTD (8), N412CSSSTD (5)	N12 (21)	WAFS (14), WAFSD (12), WAFSDA (8), WAFSDAD (5)	WAME (6)
Size Ranges	4 x 4 x 3 to 16 x 14 x 10	16 x 12 x 6 to 72 x 30 x 16	20 x 21 x 8 to 60 x 38 x 16	54 x 42 x 8 to 72 x 72 x 24	60 x 24 x 18 to 90 x 72 x 36	86 x 112 x 14 to 86 x 187 x 20
Key Features	Variety of cover options	<ul style="list-style-type: none"> Rugged workhorse. Single or two door options Clamps (single door) 3pt handle (two door) 	<ul style="list-style-type: none"> Disconnects designed to accept most major handle offerings 	<ul style="list-style-type: none"> Large two-door Industrial floor mounts Overlapping doors 3pt keylocking handle 	<ul style="list-style-type: none"> Large two-door Industrial freestandings Overlapping doors 3pt keylocking handle Single & dual access 	<ul style="list-style-type: none"> Heavy duty multi-door 3, 4 & 5 door options
Standard Features	<ul style="list-style-type: none"> Single door junction enclosures Lift off cover Continuous hinge Screw cover Quick release Seam welded construction External mtg feet top & bottom Optional sub panels SS hinge pin ANSI 61 polyester powder 	<ul style="list-style-type: none"> Single door (clamps, hasp & staple) Two door (3pt keylocking handle) Continuous hinge SS hinge pin External mtg feet top & bottom Seam welded construction Optional sub panel FIP (single door) Print pocket ANSI 61 polyester powder 	<ul style="list-style-type: none"> Single door Continuous hinge SS hinge pin External mtg feet top & bottom Optional sub panel FIP (single door) Print pocket ANSI 61 polyester powder 	<ul style="list-style-type: none"> 3pt keylocking handles Two door-overlapping Seam welded construction 12" floor stands Lifting eyes Continuous hinge Print pocket Collar studs for Optional Sub panels ANSI 61 polyester powder 	<ul style="list-style-type: none"> 3pt keylocking handles Single and two door access Seam welded construction Lifting eyes Continuous hinge Print pocket Collar studs for Optional Sub panels ANSI 61 polyester powder 	<ul style="list-style-type: none"> 3pt padlocking handles Seam welded construction Heavy duty continuous hinges Lifting eyes Light mtg channels Print pocket Sub panels installed ANSI 61 polyester powder
Ratings	NEMA Type 12, 13 UL & CSA	NEMA Type 12, 13 UL & CSA	NEMA Type 12, 13 UL & CSA	NEMA Type 12, 13 UL & CSA	NEMA Type 12, 13 UL & CSA	NEMA Type 12, 13 UL & CSA



MILD/GALV STEEL - NEMA 1/3R - COMMERCIAL CONTRACTOR

Numbers in () represent total part numbers available within family

Product Line	SC & A SERIES	N1C SERIES	RSC-RHC-LOH SERIES	WCT-CTSD-DTDD SERIES	WAGSC SERIES	WIREWAY SERIES
	SC (63), SCNK (72), SCG (59), SCGNK (72), ACAB (31)	N1CS (19), N1CLP (27), N1CL (6)	RSC (44), RSCG (44), RHCS (7), RHCM (17), LOH (10)	WCT (5), CTSD (8), CTDD (11)	WAGSC (22), WAGSCG (22)	RSCG (17), RSCGG (17), RSCGNK (17), RSCGNK (17), S (28), SNK (42), HS (28), HSNK (35)
Size Ranges	4 x 4 x 4 to 24 x 36 x 12	6 x 6 x 4 to 48 x 37 x 17	4 x 4 x 4 to 60 x 16 x 12	24 x 24 x 12 to 48 x 48 x 16	8 x 6 x 4 to 36 x 36 x 12	2 1/2" SQ TO 12" SQ
Key Features	<ul style="list-style-type: none"> W/KO, NO/KO options Carbon or Galvanized options Painted or Galvanized <p>ACAB=NOKO/Hinge cover</p>	<ul style="list-style-type: none"> N1C's available in three different configurations: small, medium and large 	<ul style="list-style-type: none"> Three available configurations: Screw Cover (reversible), Hinge Cover (continuous), and Lift Off 	<ul style="list-style-type: none"> Two lid configurations: Screw Cover and Hinge Cover (single/double door) 	<ul style="list-style-type: none"> Seam Welded Screw Cover Available in Galv (no paint), and C/S (ANSI 61 polyester powder) 	<ul style="list-style-type: none"> Wireway available in Screw Cover and Hinge Cover RSCG trough offered with closed ends and lift off cover
Standard Features	<ul style="list-style-type: none"> Flat removable covers Wall mounting holes With or without KO's Shrink wrapped Painted = ANSI 61 Polyester Powder Unpainted = Galvanized steel <p>ACAB = Hinge cover/noko/ANSI 61 only</p>	<ul style="list-style-type: none"> Continuous or butt hinge versions N1CS & N1CLP: w/rear mtg holes N1CL: mtg feet top & bottom With 1/4 turn latches With sub panel mtg provisions (sub panels optional) Grounding provisions ANSI 61 Polyester powder 	<ul style="list-style-type: none"> RSC/RHC with KO's Drip hoods Padlocking provisions (RSC/RHC) w/wall mounting provisions (sub panels optional) Grounding provisions ANSI 61 polyester powder <p>(LOH) Wall mtg & sub panel provisions optional</p> <p>RSC) also available in galv only</p>	<ul style="list-style-type: none"> Single or two door options N3R drip lip or hood Padlocking/meter seal provisions CTSD/CTDD with sub panel mtg provisions (panels optional) Grounding provisions CTSD/CTDD have lift off hinges ANSI 61 Polyester powder 	<ul style="list-style-type: none"> Gasketed screw cover Seam welded tub With captive rivnuts Grounding provisions GALV no paint Carbon steel painted ANSI 61 Polyester powder <p>Painted = ANSI 61 Polyester powder</p> <p>Unpainted = Galvanized steel</p>	<ul style="list-style-type: none"> Screw cover available in nokno, c/s painted, or galv no paint Hinge cover available in noko or wko (painted only) RSCG is no intended for wireway (designed for btm conduit entry only) S & HS wireway is also complimented by a very deep fittings line (elbows, tees, ends, panel adapter, etc.) <p>Painted = ANSI 61 Polyester powder</p>
Ratings	NEMA Type 1 UL & CSA	NEMA Type 1 UL & CSA	NEMA Type 1, 3R UL & CSA	NEMA Type 12, 13 UL & CSA	NEMA Type 1, 3R, 4 UL & CSA	NEMA Type 1 RSCG = Type 3R UL & CSA

PRODUCT SELECTION GUIDE



NON-METALLIC/OPERATOR INTERFACE/DISCONNECTS

Numbers in () represent total part numbers available within family

Product Line	NON-METALLIC	OPERATOR INTERFACE	LARGE DISCONNECTS
			WAX-U (6), WACPX-U (6), WAXM-U (13), WAXM3EW (6), WMODX (6)
Size Ranges	6 X 6 X 4 to 90 x 72 x 36	17 x 19 x 6 to 22 x 24 x 12	60 x 49 x 12 to 90 x 196 x 18
Key Features	<ul style="list-style-type: none"> Fiberglass Reinforced Polyester Excellent chemical and corrosion resistance Multiple cover configurations Screw Cover CH-SC CH-OR HC-Pull Latch HC-Link Latch 	<ul style="list-style-type: none"> Completely assembled Available in Cableway or Vertica Series Cable = pivot range only Vertica = vertical and pivotal range 	<ul style="list-style-type: none"> Floor mounted on 15" H legs (2 door) Free standing (single or double door) Multi-door (3, 4 or 5 door)
Standard Features	<ul style="list-style-type: none"> Fiberglass Reinforced Polyester FIP polyurethane gasket Stainless steel hardware Raised brass inserts for mtg Optional sub panels Full 180 degree door opening Optional opaque or clear covers Optional mtg foot kits UV resistant Non-flame propagating Temperature range: -40F to 250F Finish: Gray 	<ul style="list-style-type: none"> Completely assembled HMIs Seam Welded Lift off hinge 1/4 turn latch access Grab handle Stud mtd Alum sub panel incl. Sealed passageways Components secured by hard pins Std. preconfigured cutouts for PanelView, PanelView Plus or VersaView Vertica: counterbalanced Standard ground studs Painted: RAL7035 Textured Gray 	<ul style="list-style-type: none"> 10 gauge Seam welded Continuous hinge 3 pt padlocking vault handles Lifting eyes Light mounting channels Print pocket ANSI 61 <p>On WAX-U and WACPX-U, customer must order sub panels separately.</p>
Ratings	NEMA, UL/CUL & CSA Type 1, 3, 3S, 12, 13, 4X	NEMA, UL Type 4 (4X also available)	NEMA Type 12 UL & CSA



PUSHBUTTONS/WIREWAY/CONSOLES

Numbers in () represent total part numbers available within family

Product Line	PUSHBUTTONS/CONSOLETS	JW, LJW, C/S & SS WIREWAY	CONSOLES
	W1C (5), WC10 (3), WC12 (6), WC1248 (3), WC14B (13), WC1448 (10), WC9 (2), PB (14), PBBC (14), PBGX (9), PBXD (13), PBYX (10), PSL (4), WPBA (16), WCC (16), WCCSS (16)	JW (24), SSJW (12), LJW (30)	W1C (5), WC10 (3), WC12 (6), WC1248 (3), WC14B (13), WC1448 (10), WC9 (2)
Size Ranges	PB's available from 1 to 42 hole	2" sq to 6 x 12 sq.	40 x 24 x 20 to 50 x 60 x 23
Key Features	<ul style="list-style-type: none"> Pushbutton: 22.5 or 30.5 MM options 	<ul style="list-style-type: none"> Pull through Wireway Layin Wireway Multiple accessory options 	<ul style="list-style-type: none"> Consoles: Tub/Writing Desk/Top configurations
Standard Features	<ul style="list-style-type: none"> Seam welded construction External mtg feet Captivated cover screws/rivnuts Std '4-way' pb holes Grounding provisions Closed cell neoprene gasket ANSI 61 Polyester Powder 	<ul style="list-style-type: none"> Seam welded construction Hinged covers for quick access LAYIN or PULL through options Seam welded end flanges Closed cell neoprene gasket Butt hinges Quick release latches on (LJW series) Screw clamp latches on (JW series) ANSI 61 Polyester Powder (LJW/JW) SSJW = grained stainless steel 	<ul style="list-style-type: none"> Multi-optional Tub/Writing Desk/Top configurations Seam welded construction 3pt keylocking handles Continuous hinges, door stops, print pockets Optional sub panels
Ratings	NEMA Type 12, 13 UL/CSA	NEMA Type 12, NEMA 4X Pending UL/CSA	NEMA Type 12, 13 UL/CSA

Wiegmann® has always recognized that our customers in the electrical and electronic marketplace need reliable, high quality enclosures and environmental control products to meet their protection requirements. Protection requirements today not only mandate NEMA Type 12, 3R, 4 & 4X, but also require a broad mix of BTU & size selections.

Wiegmann is proud to offer those choices via a whole new line of A/C products. They are: Advantage Series, Trim Line Series, Micro-Mini Series, Integrity Series, Top Mount Series and the Vortex Cooler® A/C Series.

Integrity Series - NEMA 4/4X

Advantage Series - NEMA 3R

Trimline, Micro-Mini, Top Mount Series - NEMA 12

- Side/top mount
- 1,000 to 13,000 Btus
- M/Tab template installation
- Closed loop
- CFC-Free refrigerant
- EMI/RFI suppressor
- Reversible condenser blower outlet
- 115/230 volt options



Vortex Series "Compressor Driven"

- Panel Guard - **NEMA 4**
- Vortex A/C - **NEMA 4X**
- Vortex Cooler - **NEMA 12**
- Dual Vortex Cooler - **NEMA 4/4X**
- 900, 1500, 2500, 5000 btu options
- Physical size (in cubic inches) 204
- Average installation temperature 15 min.
- Maximum ambient temperature 175F (79 C)
- Operating noise level 62-64dBA
- Optional continuous purge Yes
- Weight 6 lb.
- Mounting footprint 25.5 sq. in.
- Competitive 1/3rd the cost
- Warranty 10 years



Vortex Cooler® ITW Air Management

Other Environmental Options include:

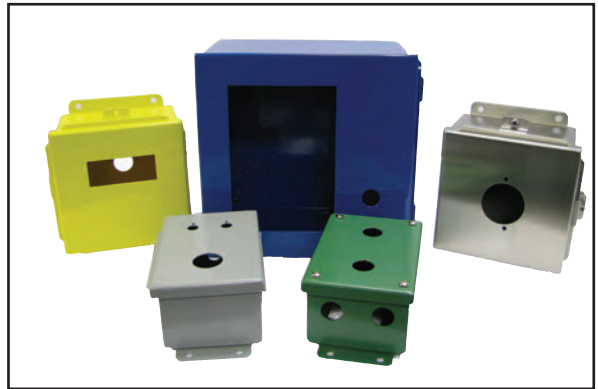
- Passive
- Fans & Vents
- Heat exchangers

MODIFIED STANDARDS & SPECIALS

As a tier one manufacturer, Wiegmann® is set up to provide a wide range of materials from carbon steel, galvanized, stainless, aluminum and painted. Today's customer requires a wide array of special colors, that's why Wiegmann offers (as an option), over 200 special colors in Polyester Powder. Wiegmann's long history of O.E.M. support stems from the cornerstone that founded our business - SPECIALS. Whether the application requires punching, tapping, studs, channel iron, sub floors, weather hoods or non-standard materials and sizes, **Wiegmann delivers.**

Why is Wiegmann the KING OF SPECIALS?...

- **Cost effective manufacturing technologies**
- **Number one in high volume turn around times**
- **Dimensional changes don't affect our flexible manufacturing lines**
- **Select from over 200 standard RAL colors**
- **Specify special studs, pems, latches, holes, cutouts, barriers, windows and more**
- **Over 80 years of enclosure experience**
- **Assisted O.E.M./Customer take-off designs**



THANK YOU

Wiegmann's tradition of quality, not only apparent in its products, is also recognized via its superior operation, reliable performance, and dependable service. This is what distinguishes Wiegmann from the rest of the competition! In today's fast pace lean environment, our mission is to be flexible and focussed, with a relentless pursuit of listening to our customers.

Wiegmann understands that you have a choice in selecting an enclosure supplier and we are pleased you have selected Wiegmann as your partner. Being a buying groups partner allows us to share our resources to help you grow sales, maintain superior service, showcase new products, minimize transaction costs, and increase profitability.



WIEGMANN®

501 West Apple
Freeburg, IL 62243
Tel: (618) 539-3193
Fax: (618) 539-5794
www.hubbell-wiegmann.com