

WIEGMANN®

The Brand to Specify

Modified Standards and Specials

NATIONALLY RECOGNIZED

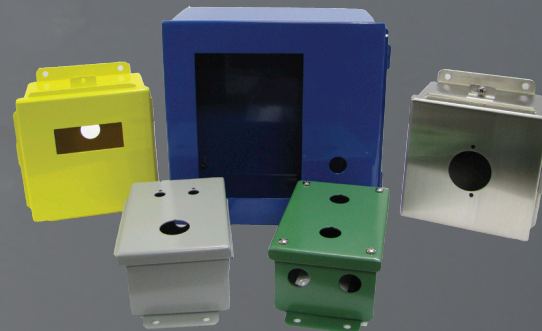
Today, the Hubbell-Wiegmann name has become synonymous with traditional NEMA enclosures, JIC enclosures, Non-Metallic enclosures, Stainless enclosures, Aluminum enclosures and Wireway systems. With over 7,000 different standard products in stock, Wiegmann has one of the most complete Industrial/Commercial enclosure packages in North America.

- A subsidiary of Hubbell, Inc., a diversified \$2.5 billion global manufacturer, with over 12,000 employees in 9 countries.
- Automated tier one enclosure manufacturer.
- 100% "USA" based/manufactured enclosures.
- **WIEGMANN® ADVANTAGES**
- Over 80 years of extensive experience in manufacturing electrical enclosures for the OEM, Commercial contractor, and MRO markets
- **HUBBELL®** Owned/Driven
- Aggressive Marketing Programs, and Competitive Pricing
- Hubbell Electrical Systems Synergies "set to grow YOUR business"
- **WIEGMANN® KILLARK® RACO® BRYANT® BELL®**
- Full breadth product line...7,000 SKUs
- Long history of OEM support "KING of Specials - Service Oriented Lead Times"
- Service driven "small core group of direct decision makers"
- Distribution loyalty
- Regional and local availability
- Specialize in extreme/corrosive environment protection, "304SS, 316LSS and Non-Metallic applications"
- Tier One Quality

As a tier one manufacturer, Wiegmann® is set up to provide a wide range of materials from carbon steel, galvanized, stainless, aluminum and painted. Today's customer requires a wide array of special colors, that's why Wiegmann offers (as an option), over 200 special colors in Polyester Powder. Wiegmann's long history of O.E.M. support stems from the cornerstone that founded our business - SPECIALS. Whether the application requires punching, tapping, studs, channel iron, sub floors, weather hoods or non-standard materials and sizes, *Wiegmann delivers.*

Why is Wiegmann the KING OF SPECIALS?...

- Cost effective manufacturing technologies
- Number one in high volume turn around times
- Dimensional changes don't affect our flexible manufacturing lines
- Select from over 200 standard RAL colors
- Specify special studs, pems, latches, holes, cutouts, barriers, windows and more
- Over 80 years of enclosure experience
- Assisted O.E.M./Customer modified designs



WIEGMANN®

501 West Apple
Freeburg, IL 62243
Tel: (618) 539-3193
Fax: (618) 539-5794

www.hubbell-wiegmann.com



WIEGMANN®

COMMERCIAL LINE



NEMA 1
PRODUCTS



WIREWAY
PRODUCTS



NEMA 3R
PRODUCTS



WIEGMANN®

NEMA 1 PRODUCTS

SC SERIES ENCLOSURES
NEMA 1 Screw Cover Wall-Mount



A SERIES ENCLOSURES
NEMA 1 Hinged Cover Wall-Mount



N1C SERIES ENCLOSURES
"Small" NEMA 1 Hinged Wall-Mount



N1C SERIES ENCLOSURES
"Medium" NEMA 1 Hinged Wall-Mount



N1C SERIES ENCLOSURES
"Large" NEMA 1 Hinged Wall-Mount



NEMA 3R PRODUCTS

RSC SERIES ENCLOSURES
NEMA 3R Screw Cover Wall-Mount



RHC SERIES ENCLOSURES
"Small" NEMA 3R Hinged Cover
Wall-Mount



RHC SERIES ENCLOSURES
"Medium" NEMA 3R Hinged Cover
Wall-Mount



LOH SERIES ENCLOSURES
NEMA 3R Hinged Cover Wall-
Mount



WCT SERIES ENCLOSURES
NEMA 3R Screw Cover Wall-
Mount



CT SERIES ENCLOSURES
NEMA 3R Single Door Hinge
Cover

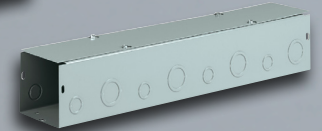


NEMA 3R
Double Door
Hinge Cover

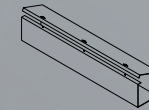


WIREWAY PRODUCTS

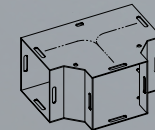
HS & S SERIES WIREWAY
NEMA 1 Wireway & Fittings



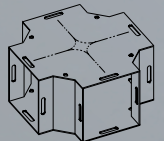
RSCG SERIES N3R
Wiring Trough



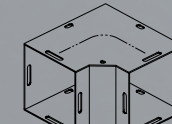
Straight Section



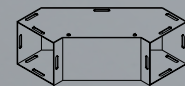
Tee



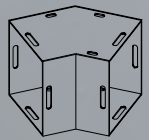
Cross



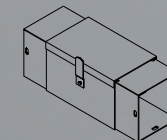
90° Elbow



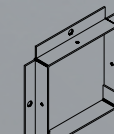
Sweep Elbow



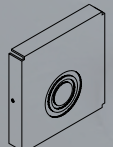
45° Elbow



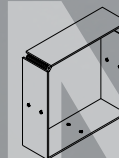
Telescope Fitting



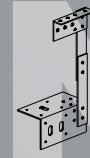
Panel Adapter



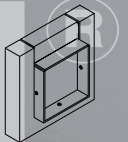
End Cap



Connector



Combination Hanger



Reducer