

**MADE TO ORDER**

## *Cableway Series*

### Operator Interface Mounting Terminals



### **FEATURES**

➤ *BUILT THE WAY  
OEMs LIKE THEM  
(TO THEIR SPECS)*

➤ *STRONGEST*

➤ *BEST QUALITY*

➤ *BUILT TO LAST*

- *Completely assembled and ready to install HMIs*
- *Included fixed grab handle*
- *Sealed cable passageways*
- *Mounting arms swivel at both ends (330° movement)*
- *Component parts/arms secured by HARD PINS, not unstable set screws*
- *Standard preconfigured cutout for PanelView, Panel View Plus, or VersaView*
- *UL508A Listed, NEMA 4*
- *Finish: RAL7035 Textured Light Gray*



**WIEGMANN®**

501 West Apple  
Freeburg, IL 62243  
TEL: (618) 539-3193 FAX: (618) 539-5794  
www.hubbell-wiegmann.com

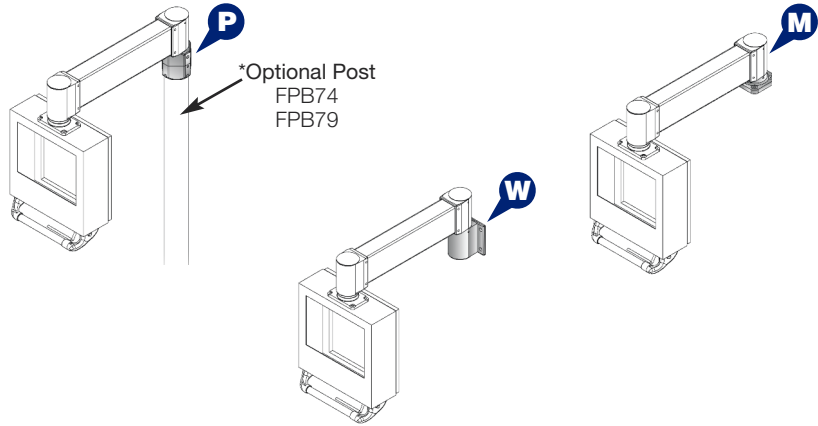
**Wiegmann-Strongarm  
The Leader in Special  
OI and MTO Terminals**

**1 Mounting Style/Pick One**

**(P) Post Top Mount\***  
(\*Must Order Post separately.)

**(W) Wall Mount**

**(M) Machine Top Mount**



Code

\_\_\_\_\_  
\_\_\_\_\_  
\_\_\_\_\_

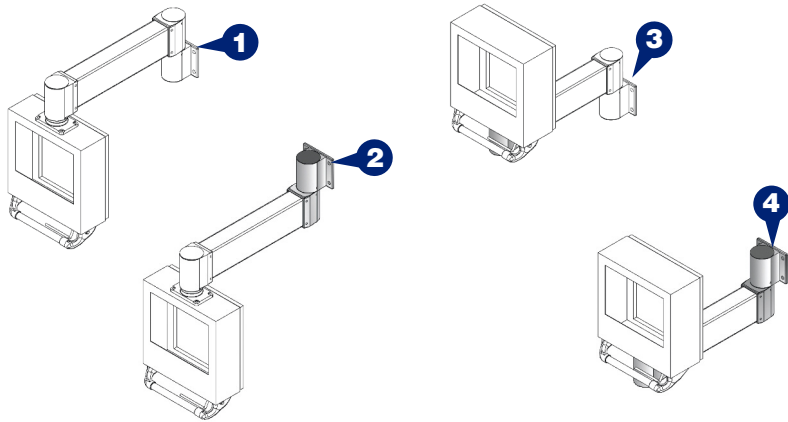
**2 Configuration/Pick One**

**(1) Standard**

**(2) Inverted**

**(3) Supported**

**(4) Inverted/Supported**



Code

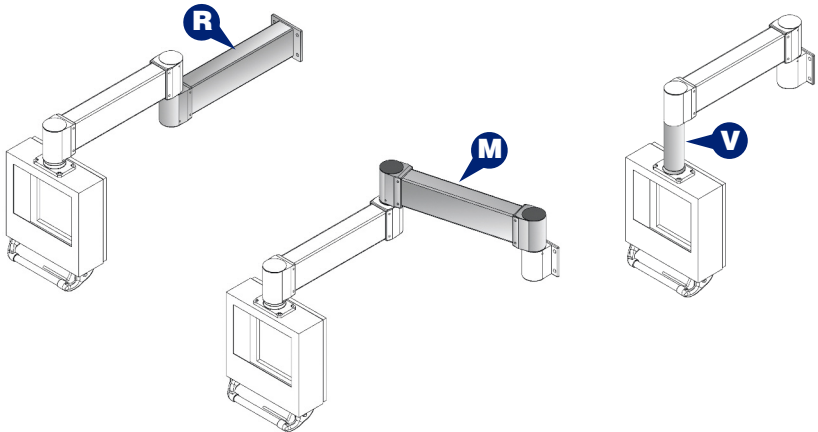
\_\_\_\_\_  
\_\_\_\_\_  
\_\_\_\_\_  
\_\_\_\_\_

**3 Extensions/Pick One**

**(R) Rigid Wall Mount**

**(M) Middle Joint**  
NOTE: (Use 79" Floor Post if selecting Post Top Option)

**(V) Vertical Extensions**



Code

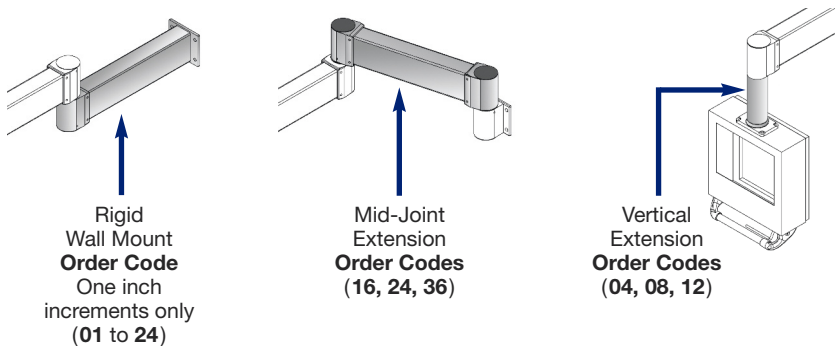
\_\_\_\_\_  
\_\_\_\_\_  
\_\_\_\_\_

**4 Extensions Length Options**

**Rigid Wall Mount**  
(Any length 0 to 24 inches)

**Middle Joint Extensions**  
(Available in 16", 24" and 36" only)  
NOTE: See **Options** 79" Floor Post

**Vertical Extensions**  
(Available in 04", 08" and 12" only)



Code Length

\_\_\_\_\_

MANUFACTURER	ENCLOSURE DESCRIPTION	ORDER CODE			SUBPANEL SIZE		SIDE DOOR (LEFT, RIGHT, OR NA)	AVAIL. DEPTH BETWEEN OI UNIT & SUBPANEL	CUTOUT LOCATION A	PB SPACE
		H.	W.	D.	PH	PW				
Advantech	PPC 120/123	17.0	19.0	06	14H	15W	Y	***	***	4.8
Advantech	PPC 150/153	18.0	19.0	06	15H	15W	Y	***	***	4.3
Advantech	IPPC 920/950	18.0	19.0	06	15H	15W	Y	***	***	5.2
Advantech	FPM 30	15.0	17.0	06	12H	13W	N	***	***	4.5
Advantech	FPM 3100	16.0	17.0	06	13H	13W	N	***	***	4.6
Advantech	FPM 3150	18.0	19.0	06	15H	15W	N	***	***	4.8
Allen Bradley	PanelView 550 touch only	11.5	12	06	8.5H	8W	NA	3.8	4.5	4.0
Allen Bradley	PanelView 550 keypad	12.0	13	06	9H	9W	NA	3.0	4.6	4.2
Allen Bradley	PanelView 600 touch only	11.5	12	06	8.5H	8W	NA	3.2	4.5	4.0
Allen Bradley	PanelView 600 keypad	13.0	14	07	10H	10W	NA	3.7	5.1	4.2
Allen Bradley	PanelView 900 touch only	15.0	16	07	12H	12W	NA	3.8	6.3	3.8
Allen Bradley	PanelView 900 keypad	15.0	18	07	12H	14W	NA	3.8	5.9	4.2
Allen Bradley	PanelView 1000 touch only	16.5	17	07	13.5H	13W	NA	3.8	6.8	4.2
Allen Bradley	PanelView 1000 keypad	16.5	19	07	13.5H	15W	NA	3.8	6.7	4.2
Allen Bradley	PanelView 1000e touch only	16.5	17	09	13.5H	13W	NA	3.2	6.8	4.2
Allen Bradley	PanelView 1000e keypad	16.5	19	09	13.5H	15W	NA	3.2	6.7	4.2
Allen Bradley	PanelView Plus 400 keypad	11.5	12	07	8.5H	8W	NA	3.8	4.5	4.0
Allen Bradley	PanelView Plus 600 touch only	11.5	12	07	8.5H	8W	NA	3.5	4.5	4.0
Allen Bradley	PanelView Plus 600 keypad	12.0	13	07	9H	9W	NA	3.5	4.6	4.2
Allen Bradley	PanelView Plus 700 touch only	12.0	12	06	9H	8W	NA	3.1	4.7	3.8
Allen Bradley	PanelView Plus 700 keypad	13.0	14	06	10H	10W	NA	3.1	5.1	4.1
Allen Bradley	PanelView Plus 1000 touch only	15.0	15	06	12H	11W	NA	3.1	5.9	4.2
Allen Bradley	PanelView Plus 1000 keypad	15.0	18	06	12H	14W	NA	3.1	6.0	4.1
Allen Bradley	PanelView Plus 1250 touch only	16.5	17	06	13.5H	13W	NA	3.1	6.9	4.0
Allen Bradley	PanelView Plus 1250 keypad	16.5	19	06	13.5H	15W	NA	3.1	6.9	4.1
Allen Bradley	PanelView Plus 1500 touch only	18.5	19	07	15.5H	15W	NA	3.7	7.8	4.2
Allen Bradley	PanelView Plus 1500 keypad	18.0	21	07	15H	17W	NA	3.7	7.8	3.8
Allen Bradley	6180W-1500W	19.5	22	12	16.5H	18W	R	3.5	8.5	4.0
Allen Bradley	6181F-1200P	16.0	16	10	13H	12W	L	3.4	6.6	3.9
Allen Bradley	6181F-1500P	17.5	19	07	14.5H	15W	R	3.1	7.5	3.9
Allen Bradley	6181F-1700P	19.0	20	07	16H	16W	R	3.0	8.1	3.9
Allen Bradley	6181P-1200P	16.0	16	10	13H	12W	L	3.4	6.6	3.9
Allen Bradley	6181P-1500P	17.5	19	07	14.5H	15W	R	3.1	7.5	3.9
Allen Bradley	6181P-1700P	19.0	20	07	16H	16W	R	3.0	8.1	3.9
Allen Bradley	6182H-700H TOUCH ONLY	12.0	12	06	9H	8W	NA	3.1	4.7	3.8
Allen Bradley	6182H-700H KEYPAD	13.0	14	06	10H	10W	NA	3.1	5.1	4.1
Allen Bradley	6182H-1000H TOUCH ONLY	15.0	15	06	12H	11W	NA	3.1	5.9	4.2
Allen Bradley	6182H-1000H KEYPAD	15.0	18	06	12H	14W	NA	3.1	6.0	4.1
Allen Bradley	6182H-1250H TOUCH ONLY	16.5	17	06	13.5H	13W	NA	3.1	6.9	4.0
Allen Bradley	6182H-1250H KEYPAD	16.5	19	06	13.5H	15W	NA	3.1	6.9	4.1
Allen Bradley	6182H-1500H TOUCH ONLY	18.5	19	07	15.5H	15W	NA	3.7	7.8	4.2
Allen Bradley	6182H-1500H KEYPAD	18.0	21	07	15H	17W	NA	3.7	7.8	3.8
Allen Bradley	6186M-1200M	15.5	16	05	12.5H	12W	NA	3.1	6.4	4.0
Allen Bradley	6186M-1500M	17.5	19	05	14.5H	15W	NA	3.1	7.5	3.9
Allen Bradley	6186M-1700M	19.0	20	05	16H	16W	NA	3.2	8.1	3.9
Ann Arbor	INX 6000/7000	19.0	22.0	10	16H	18W	Y	***	***	5.2
Ann Arbor	INX 8000/9000	19.0	22.0	10	16H	18W	Y	***	***	5.3
Ann Arbor	ATT 1500 Flat Panel TFT Industrial Computer	22.0	24.0	10	19H	20W	Y	***	***	4.8
Ann Arbor	ATT 2000 Flat Panel TFT Industrial Computer	22.0	24.0	12	19H	20W	Y	***	***	4.8

H.W.D.

Number of Hinges = 2. Number of (1/4 turn) Latches = 2 per side.  
 \*\*\* Consult Factory.



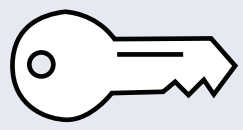
MANUFACTURER	ENCLOSURE DESCRIPTION	ORDER CODE			SUBPANEL SIZE		SIDE DOOR (LEFT, RIGHT, OR NA)	AVAIL. DEPTH BETWEEN OI UNIT & SUBPANEL	CUTOUT LOCATION A	PB SPACE
		H.	W.	D.	PH	PW				
Christensen	LS10/LS10T	16.0	15.0	06	13H	11W	N	***	***	5.1
Christensen	LS12/LS12T	17.0	17.0	06	14H	13W	N	***	***	4.5
Christensen	LX14-WA/LX14T-WA	18.0	19.0	06	15H	15W	N	***	***	3.5
Christensen	LX15/LX15T	18.0	19.0	06	15H	15W	N	***	***	3.4
Christensen	LSX18/LSX18T	22.0	22.0	06	19H	18W	N	***	***	4.8
Christensen	LSX20/LSX20T	24.0	24.0	06	21H	20W	N	***	***	4.0
CTC	P1 Touchscreen	12.0	13.0	06	9H	9W	N	***	***	5.4
CTC	P2 Touchscreen	17.0	19.0	06	14H	15W	Y	***	***	5.0
CTC	P3 Touchscreen	17.0	19.0	08	14H	15W	Y	***	***	5.0
CTC	P4 Touchscreen	17.0	19.0	10	14H	15W	Y	***	***	5.0
CTC	P5 Function Key	20.0	22.0	10	17H	18W	Y	***	***	5.0
CTC	P9 Touchscreen 12"	18.0	22.0	11	15H	18W	Y2	***	***	4.9
CTC	P9 Touchscreen 15"	19.0	22.0	12	16H	18W	Y2	***	***	4.7
CTC	P9 Touchscreen 12" RS	18.0	19.0	06	15H	15W	Y2	***	***	4.9
CTC	P9 Touchscreen 15" RS	19.0	22.0	06	16H	18W	Y2	***	***	4.7
Cutler Hammer	PanelMate 1500/1700 Keypad	16.0	15.0	06	13H	11W	N	***	***	4.0
Cutler Hammer	PanelMate 1500/1700 Touchscreen	13.0	13.0	06	10H	9W	N	***	***	4.4
Cutler Hammer	PanelMate 2000 Keypad (2400)	17.0	15.0	14	14H	11W	N	***	***	3.5
Cutler Hammer	PanelMate 2000 Keypad (2600)	18.0	15.0	14	15H	11W	N	***	***	3.9
Cutler Hammer	PanelMate 3000 Keypad	18.0	19.0	08	15H	15W	Y	***	***	4.0
Cutler Hammer	PanelMate 3000 Touchscreen	17.0	17.0	08	14H	13W	Y	***	***	4.0
Cutler Hammer	PanelMate 5000 (5500)	25.0	22.0	08	22H	18W	Y	***	***	4.3
Cutler Hammer	PanelMate 5000 Split Arch (5200)	25.0	22.0	08	22H	18W	Y	***	***	4.3
Cutler Hammer	PanelMate 5000 Touchscreen (5500)	19.0	19.0	08	16H	15W	Y	***	***	4.1
Exor	MON 15.1 XGA	19.0	19.0	06	16H	15W	N	***	***	4.8
Exor	TLIN 15.1 X	19.0	19.0	08	16H	15W	Y	***	***	4.8
TCP	Quickpanel Jr. (5" LCD Mono or STN Color)	12.0	13.0	06	9H	9W	N	***	***	5.0
TCP	Quickpanel Jr. (6" LCD Mono or STN Color)	12.0	13.0	06	9H	9W	N	***	***	4.6
TCP	Quickpanel Jr. (6" Mini Mono)	12.0	13.0	06	9H	9W	N	***	***	4.2
TCP	Quickpanel 9" Mono EL	14.0	13.0	06	11H	9W	N	***	***	4.1
TCP	Quickpanel 10.5" (Mono, Color STN, TFT)	15.0	15.0	06	12H	11W	N	***	***	4.4
TCP	Quickpanel 12.1" (Color TFT)	16.0	17.0	06	13H	13W	N	***	***	4.3
Viewtronix	IC 1040	16.0	17.0	09	13H	13W	Y	***	***	4.0
Viewtronix	IC 1210	17.0	19.0	09	14H	15W	Y	***	***	4.1
Viewtronix	IC 1500	19.0	22.0	09	16H	18W	Y	***	***	4.0
Viewtronix	VT 1040	16.0	17.0	05	13H	13W	N	***	***	4.0
Viewtronix	ST 1210	17.0	17.0	05	14H	13W	N	***	***	4.1
Viewtronix	XT 1500	19.0	22.0	06	13H	18W	N	***	***	4.0
Viewtronix	SXT 1811	21.0	22.0	06	18H	18W	N	***	***	4.3
Viewtronix	SXT 2010	23.0	24.0	06	20H	20W	N	***	***	4.0
Xycom	3015	20.0	22.0	06	17H	18W	Y	***	***	4.3
Xycom	3115T	18.0	19.0	06	15H	15W	Y	***	***	4.7
Xycom	3408KP	15.0	17.0	06	12H	13W	Y	***	***	4.5
Xycom	3408T	15.0	15.0	06	12H	11W	Y	***	***	4.5
Xycom	3410KP/3412KP	18.0	22.0	06	15H	18W	Y	***	***	4.3
Xycom	3410T/3412T	17.0	19.0	06	14H	15W	Y	***	***	4.5
Xycom	3510KP/3512KP	18.0	22.0	08	15H	18W	Y	***	***	4.3
Xycom	3510T/3512T	16.0	19.0	08	13H	15W	Y	***	***	4.0
Xycom	3512KPM/3515KPM/3515T	20.0	24.0	12	17H	20W	Y	***	***	4.3

H.W.D.

Number of Hinges = 2. Number of (1/4 turn) Latches = 2 per side.  
 \*\*\* Consult Factory.

## 6 Options/Choices

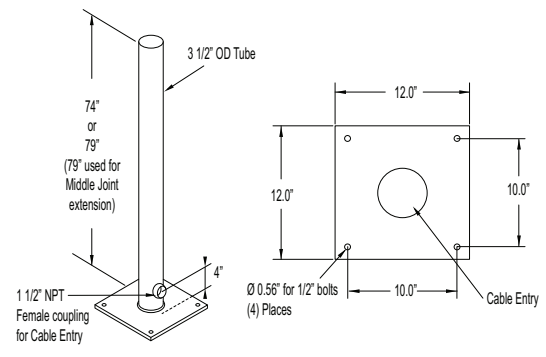
**Keyed Door Lock Option**  
Security For your Enclosure  
**Option Code (Key)**



**Floor Post Options**

- 74" Floor Post with 12" Base Includes 1-1/2" NPT Coupling **Option Code(FPB74)**
- 79" Floor Post with 12" Base Includes 1-1/2" NPT Coupling **Option Code(FPB79)**

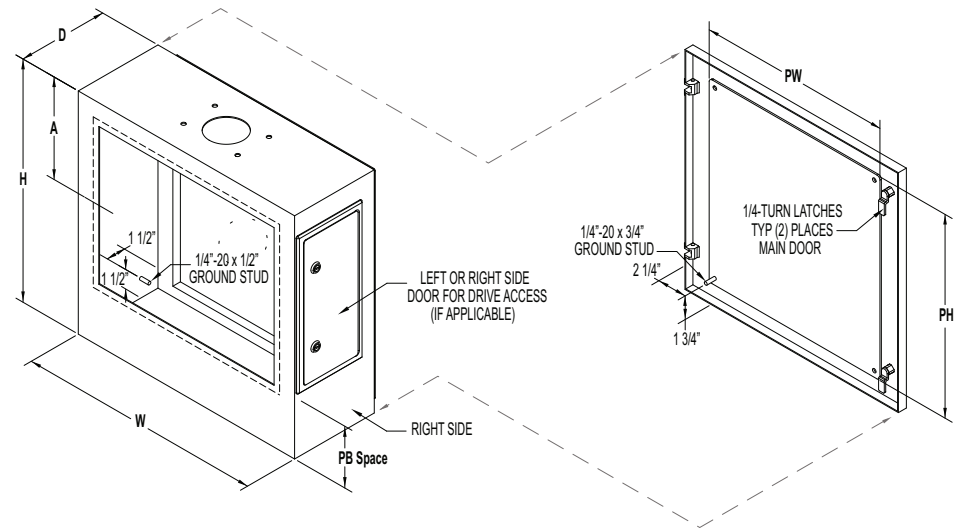
**NOTE:** Use when ordering Mid-Joint Extension



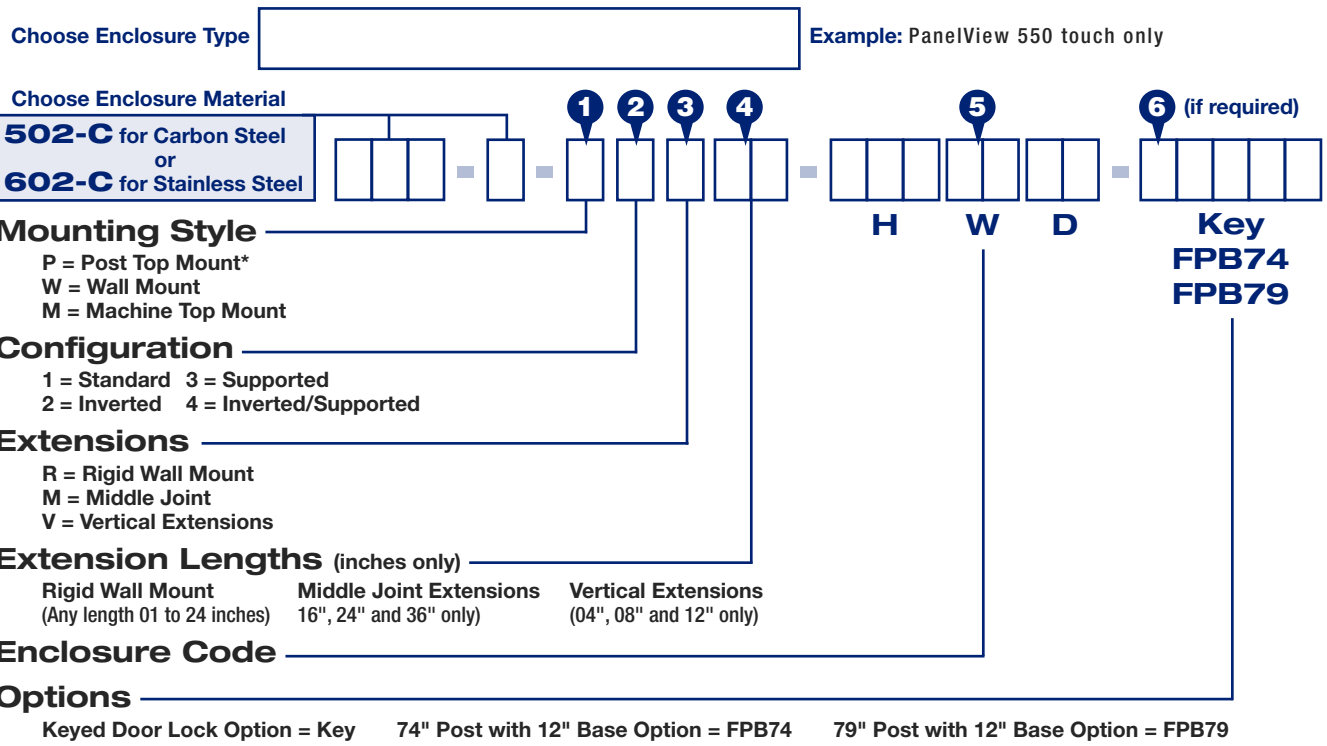
Code

\_\_\_\_\_  
\_\_\_\_\_  
\_\_\_\_\_

### Cableway Series Dimension Indicator



## Ordering Logic For Operator Interface Mounting



## **CABLEWAY SERIES DESCRIPTION**

### **OI ENCLOSURE**

- Standard 14ga C/S or SS seam welded OI (enclosure, tub/lid)
- Standard gasketed hinged lift-off rear door
- Standard 1/4 turn latches (optional keylocking 1/4 turns)
- Standard .125 aluminum sub panels painted & stud mounted in place
- Standard ground studs (tub and lid)
- Included fixed grab handle
- Standard preconfigured/cutout for PanelView, PanelView Plus, or VersaView Series HMIs (HMIs are supplied/installed by customer)

### **CABLEWAY ARMS and MOUNTS**

- Typical 3/8" thick MOUNTS supported by 1/2" thick wall plates
- Mounting arms swivel at both ends (330 degree movement)
- Sealed cable passageways
- Component parts/arms secured by HARD PINS, not unstable set screws

### **FINISH**

- C/S = RAL7035 Textured Light Gray inside and out (other optional RAL colors available)
- SS = No. 4 satin polish finish

### **INDUSTRY STANDARDS**

- UL508A Listed, NEMA 4
- If Stainless Steel, UL508A Listed, NEMA 4X applies

### **ACCESSORIES**

- Optional KEYLOCKING 1/4 turn latches (available for side or main door...see options)
- Optional 74" or 79" Floor Posts with 12" base (see options)

### **MODIFICATIONS**

- Additional cutouts/pushbutton holes can be added via customer requests (see "PB" on specs for available space)

Please finish by filling out bottom and forward all four pages directly to Wiegmann  
"ATTENTION: SPECIAL QUOTATIONS", Fax to 618 539 5794

Rep:	Name:
Dist:	OEM/End Customer:
Date:	Order Code:

Options (must circle yes or no):KEY (Y/N), FPB74 (Y/N), FPB79 (Y/N)