

## A. DISCLAIMER

- All contents and specification mentioned in this manual are subject to change without prior notice.
- All brand names and trademarks referenced and mentioned in this manual are property of their respective owners.
- We strongly recommend you to backup all the data in the hard drive before installing it to the product. We held no responsibility for any data loss due to improper installation, misuse, abuse, or neglect.
- In case of a high electrostatic discharge and fast transient disturbance from the power source, you may need to reset the product manually by switching it off for a few seconds before switching it on again.

## B. INTRODUCTION

The USB 3.0 SATA-II HDD Docking Station comes with a Super Speed USB 3.0 interface which is 10 times faster than any other USB 2.0 docking station in the market. The product is designed to accommodate any 2.5" and 3.5" SATA hard drive externally in a fast and convenient way. With the aid of rigid clamp fastener design, it gives your hard drive the ultimate vibration proof protection. Supporting USB data transfer rate of up to 5.0Gbps, the product is an ideal removable storage device for all kinds of application, such as multimedia file storage, and for computer enthusiasts who need frequent hard drive swapping on the workbench.

## C. FEATURES AND SPECIFICATION

### General

- Perfect hard drive protection
  - > Rigid clamp fastener design protects the hard drive against vibration or shaking
  - > Insulator plate design for hard drive's PCB protection
- LED indicators: Power On, USB 3.0 Mode, USB 2.0 Mode. Either USB 2.0 or USB 3.0 LED blinks when data transfer is occurring.
- One-Touch Backup button
- No need driver installation for popular O/S with built-in USB Mass Storage class driver

### USB Interface

- Compliant with Universal Serial Bus 3.0 Specification, Revision 1.0
- Compliant with Universal Serial Bus Specification, Revision 2.0
- Compliant with USB Mass Storage Bulk only Specification 1.0
- Supported data transfer rates: USB 3.0 Super-Speed (5Gbps), USB 2.0 High-Speed (480Mbps), and USB 2.0 Full-Speed (12Mbps)
- Supports USB Plug-n-Play and Hot-Swap

### Hard Drive (HDD) Interface

- Compliant with Serial ATA (SATA) Specification 2.6
- Supports SATA-I (1.5Gbps) and SATA-II (3.0Gbps)

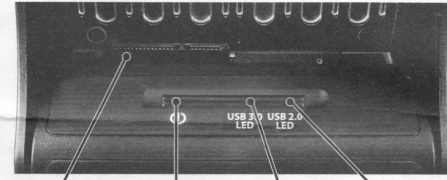
- Supports SATA-III (6Gbps) hard drive working at SATA-II speed
- Accommodates one 2.5" or 3.5" SATA hard drive
- Supports large capacity storage hard drive of over 2TB
- Supports SATA Plug-n-Play and Hot-Swap

## D. PACKAGE CONTENTS

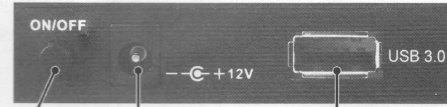
Please check whether the package contains the following items. If any item is missing or damaged, please contact the retailer as soon as possible:

- USB 3.0 SATA-II HDD docking station x1
- USB 3.0 cable x 1
- 2.5" HDD fixture x 1
- Universal AC100~240V 50/60Hz to DC12V/2.0A power adapter x1
- User's Manual x1

## E. PRODUCT OVERVIEW

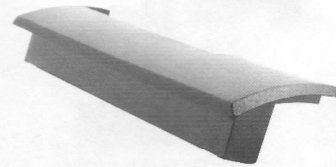


SATA HDD Socket    Power Indicator    USB 3.0 LED    USB 2.0 LED



Power Switch    DC 12V Power Jack    USB 3.0 Port to computer

### 2.5" HDD fixture:

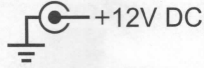
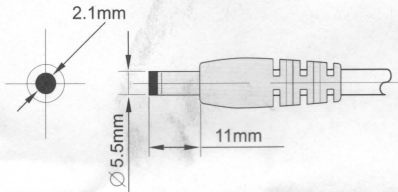


## F. HARDWARE INSTALLATION

### F1. Before installation:

Before the installation of the docking station, let us make the following assumptions:

- The end users must have the basic knowledge of installing the hardware to a PC. If they are not sure about their abilities or have any queries, please contact their local dealers immediately, or find somebody who is experienced and qualified for assistance.
- If you use a third party's AC power adapter, use only the one with the following specifications:
  - > Input: AC 100-240V, 50/60Hz, 0.6A (600mA)
  - > Output: DC +12V, 2.0A (2000mA)
  - > DC plug polarity: Outside = Negative (-). Inside = Positive (+)
  - > DC plug dimension: Outer diameter = 5.5mm. Inner diameter = 2.1mm. Length = 11.0mm

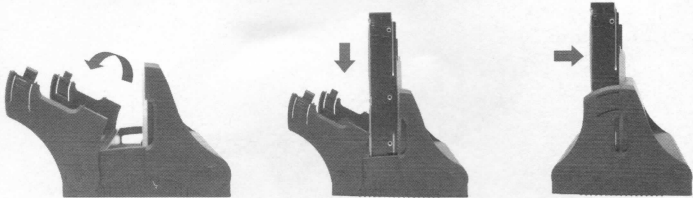


### F2. Cable connection

1. Make sure the power switch of the HDD docking station is in "OFF" position
2. Connect the DC plug of the AC adapter to the product
3. Connect one end of the USB 3.0 cable to the product, the other end to your computer USB port. To obtain maximum performance, connect to an available USB 3.0 host port if it is available on your computer.

### F3. 3.5" SATA hard drive installation

1. Make sure the software driver of the USB 3.0 host port on your computer has been installed properly.
2. Make sure the power switch of the HDD docking station is in OFF position.
3. Install the 3.5" SATA hard drive as shown in the following figures
4. Turn on the HDD docking station.
5. Your computer should detect the hard drive right after it spins up.



1) Open the clamp fastener

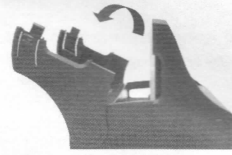
2) Insert the SATA hard drive

3) Close the clamp fastener

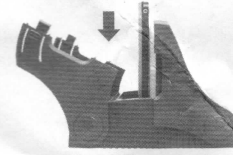
3

### F4. 2.5" SATA hard drive installation

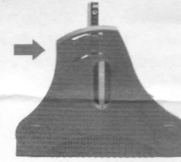
1. Make sure the software driver of the USB 3.0 host port on your computer has been installed properly.
2. Make sure the power switch of the HDD docking station is in OFF position
3. Install the 2.5" SATA hard drive, as well as the 2.5" HDD fixture as shown in the following figures.
4. Turn on the SATA HDD docking station.
5. Your computer should detect the hard drive right after it spins up.



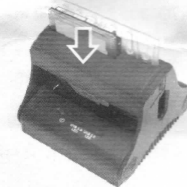
1) Open the clamp fastener



2) Insert the SATA hard drive



3) Close the clamp fastener



4) Insert 2.5" HDD fixture

## G. GETTING THE LATEST DRIVER, SOFTWARE & DOCUMENT

To get the latest driver, software and document, please visit the following website:  
<http://www.drivers-download.com>

In "Drivers Search" section, please enter the Download code (DL code): **DL-0221507** and hit the "Search now" button

*All contents and specification mentioned in this manual are subject to change without prior notice  
All brand names and trade names referenced and mentioned in this manual are property of their respective owners.*